

Mech-Eye LSR L Industrial 3D Camera



- High accuracy
- Large FOV
- Ambient light resistance
- Ideal for robotic guidance



IP65 water & dust proof



High stability



Fast scanning



High cost performance



Superb usability

Specification

Recommended Working Distance: 1200-3000 mm

Near FOV: 1200 × 1000 mm @ 1.2 m

Far FOV: 3000 × 2400 mm @ 3.0 m

Depth Map Resolution: 2048 × 1536

RGB Resolution: 4000 × 3000 / 2000 × 1500

Megapixels: 3.0 MP

Point Z-value Repeatability (σ)^[1]: 0.5 mm @ 3.0 m

Measurement Accuracy (VDI/VDE)^[2]: 1.0 mm @ 3.0 m

Typical Capture Time: 0.5-0.9 s

Image Sensor: Sony CMOS for high-end machine vision

Dimensions: Approx. 459 × 77 × 86 mm

Baseline: Approx. 380 mm

Weight: Approx. 2.9 kg

Operating Temperature: -10-45°C

Communication Interface: Gigabit Ethernet

Input: 24 V DC, 3.75 A

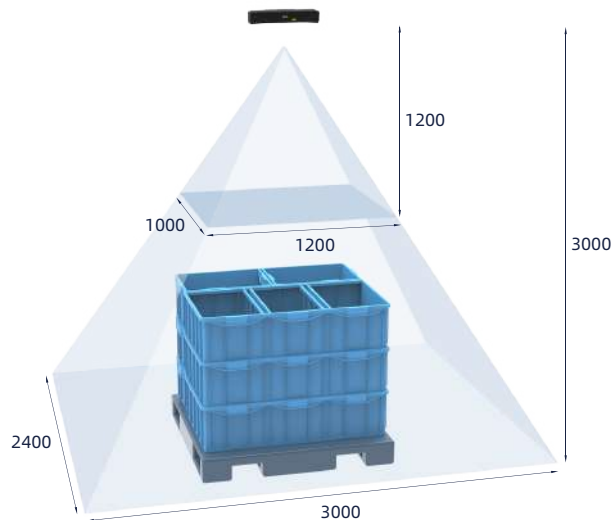
Safety and EMC: CE/FCC/VCCI/UKCA/KC/ISED/NRTL

IP Rating: IP65

Cooling: Passive

Light Source: Red Laser (638 nm, Class 2)

Field of View (mm)



[1] One standard deviation of 100 Z-value measurements of the same point. The measurement target was a ceramic plate.

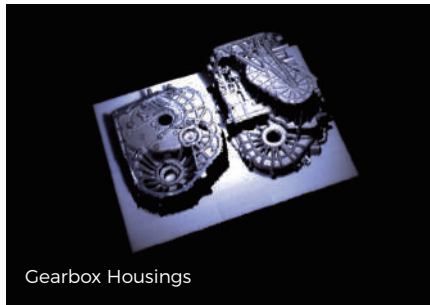
[2] According to VDI/VDE 2634 Part II.

Point Clouds

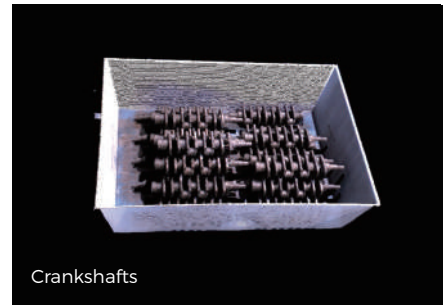
- Mech-Eye LSR L with improved ambient light resistance can generate complete, accurate, and detailed point clouds of typical objects in light conditions of > 30,000 lx.
- The new Mech-Eye LSR L can output accurate and high-quality colored 3D point clouds of colored cartons, sacks, and more.
- With advanced optical algorithms and technologies, Mech-Eye LSR L outputs complete 3D images of reflective objects.



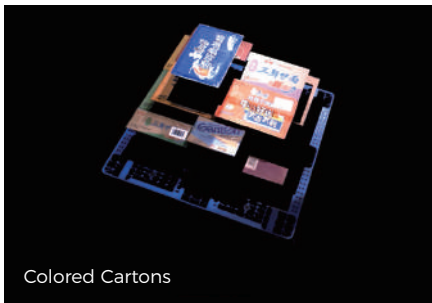
Track Links



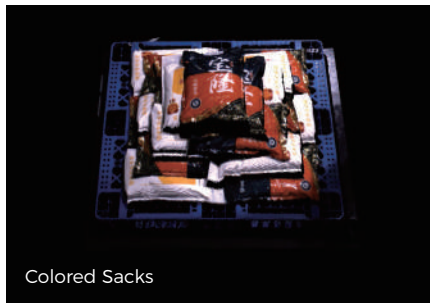
Gearbox Housings



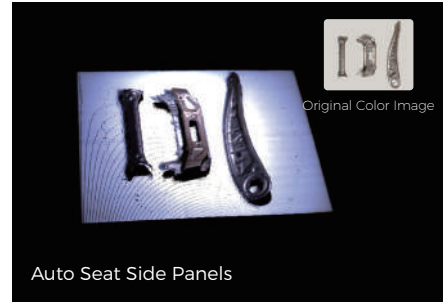
Crankshafts



Colored Cartons



Colored Sacks



Auto Seat Side Panels

Point clouds captured by Mech-Eye LSR L under challenging light conditions of >30,000 lx @ 2.0 m

Broad Application Coverage

- Mech-Eye LSR is ideal for factory-floor applications with strong ambient light interference, minimizing the need for shading facilities.



- Mech-Eye LSR has been widely implemented in a wide range of typical applications, including bin picking, machine tending, localization, gluing, spraying, welding, etc.



Abiz Technology Co., Ltd.

57/65 Soi Song Sa-ard, Vibhavadirangsit Road Chomphon, Chatuchak, Bangkok 10900, Thailand

Email : info@abizsensor.com Telephone : +66 (0) 2-275-5475

Fax : +66 (0) 2-275-5875

Mobile : +66 (0) 99-915-1459, +66 (0) 81-898-8398

www.abizsensor.com