



Mech-Eye NANO

Palm-sized Industrial 3D Camera

High Precision · Small Size · Fast Acquisition
High Flexibility · Easy Integration · Competitive Price



Specification

Recommended Working Distance: 300-600 mm

Near FOV: 220 × 150 mm @ 0.3 m

Far FOV: 440 × 300 mm @ 0.6 m

Resolution: 1280 × 1024

Megapixels: 1.3 MP

Operating Temperature: 0-45°C

Communication Interface: Gigabit Ethernet

IP Rating: IP65

Image Sensor: Sony CMOS for high-end machine vision

Point Z-value Repeatability (σ)^[1]: 0.1 mm @ 0.5 m

Measurement Accuracy (VDI/VDE)^[2]: 0.1 mm @ 0.5 m

Typical Capture Time: 0.6-1.1 s

Baseline: Approx. 68 mm

Dimensions: Approx. 145 × 51 × 85 mm

Weight: Approx. 0.7 kg

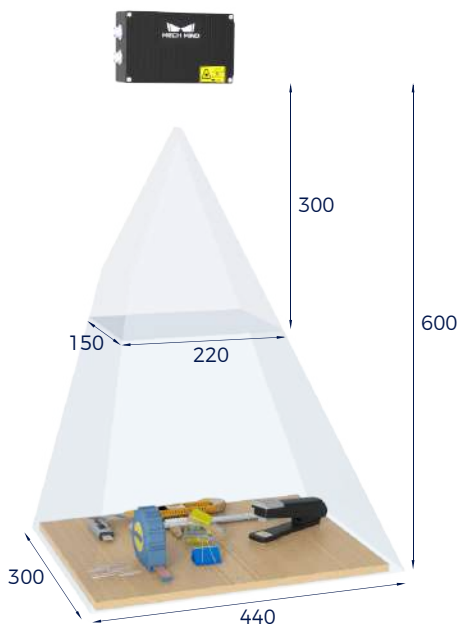
Input: 24 V DC, 1.5 A

Light Source: Blue LED (459 nm, RG2)

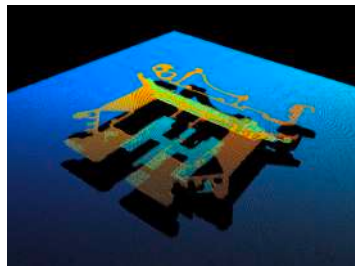
Safety and EMC: CE/FCC/VCCI/UKCA/KC/ISED/NRTL

Cooling: Passive

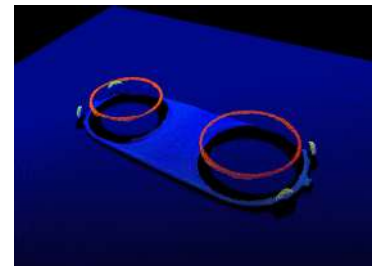
Field of View (mm)



Point Clouds



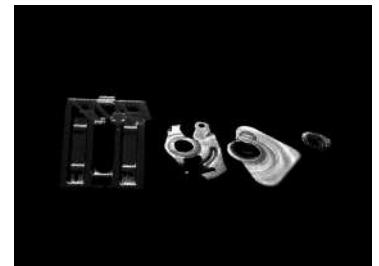
Precision Component



0.68 mm Thick Workpiece



Car Charging Port



Small Workpieces



Abiz Technology Co., Ltd.

57/65 Soi Song Sa-ard, Vibhavadirangsit Road Chomphon, Chatuchak, Bangkok 10900, Thailand

Email : info@abizsensor.com

Telephone : +66 (0) 2-275-5475

Fax : +66 (0) 2-275-5875

Mobile : +66 (0) 99-915-1459, +66 (0) 81-898-8398

www.abizsensor.com