

Mech-Eye DEEP Industrial 3D Camera

For depalletizing and palletizing applications in logistics

Ultra-large FOV | High accuracy | For long-range working distance
High performance | Competitive price | Plug & play simple setup



Specification

Recommended Working Distance: 1200–3500 mm

Near FOV: 1200 × 1000 mm @ 1.2 m

Far FOV: 3500 × 2800 mm @ 3.5 m

Depth Map Resolution: 2048 × 1536

RGB Resolution: 2000 × 1500

Point Z-value Repeatability (σ)^[1]: 1.0 mm @ 3.0 m

Measurement Accuracy (VDI/VDE)^[2]: 3.0 mm @ 3.0 m

Typical Capture Time: 0.5–0.9 s

Image Sensor : Sony CMOS for high-end machine vision

Baseline: Approx. 300 mm

Dimensions: Approx. 366 × 77 × 92 mm

Weight: Approx. 2.4 kg

Light Source: Red laser (638 nm, Class 2)

Operating Temperature: -10–45°C

Communication Interface: Gigabit Ethernet

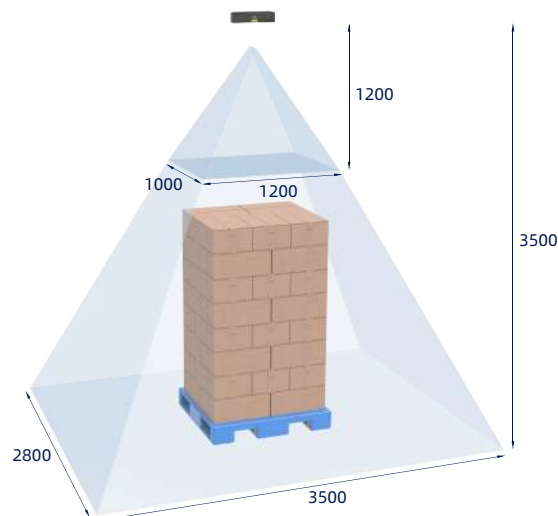
Input: 24 V DC, 3.75 A

Safety and EMC: CE/FCC/VCCI/UKCA/KC/ISED/NRTL

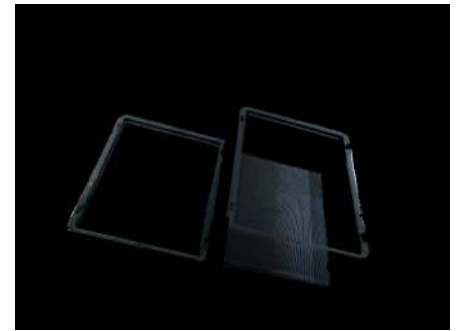
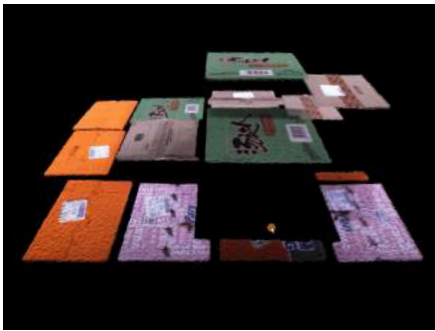
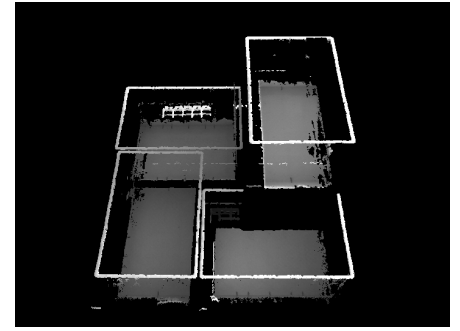
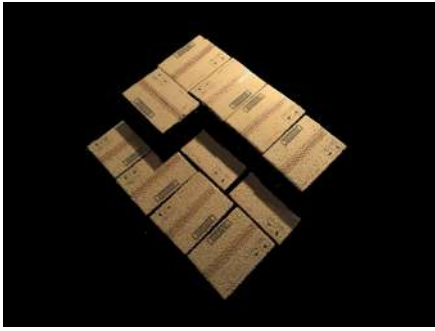
IP Rating: IP65

Cooling: Passive

Field of View (mm)



Point Clouds



Tightly-packed cartons with patterns or tapes

Tightly-packed sacks with patterns

Thin-walled totes

Designed to enable large FOV logistics applications.



Abiz Technology Co., Ltd.

57/65 Soi Song Sa-ard, Vibhavadirangsit Road Chomphon, Chatuchak, Bangkok 10900, Thailand

Email : info@abizsensor.com Telephone : +66 (0) 2-275-5475

Fax : +66 (0) 2-275-5875

Mobile : +66 (0) 99-915-1459, +66 (0) 81-898-8398

www.abizsensor.com