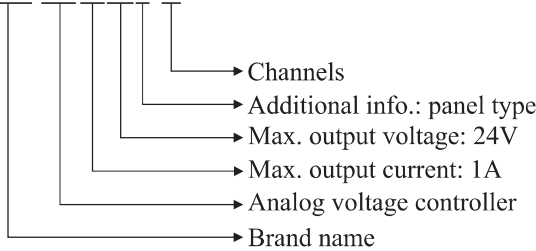


AP Analog Voltage Controller Patented



Selection Guide

OPT-AP1024F-X



Model	Channels	Compatible Light
OPT-AP1024F-1	1	10mA - 1A 24V
OPT-AP1024F-2	2	10mA - 1A 24V
OPT-AP1024F-3	3	10mA - 1A 24V
OPT-AP1024F-4	4	10mA - 1A 24V

Product Features

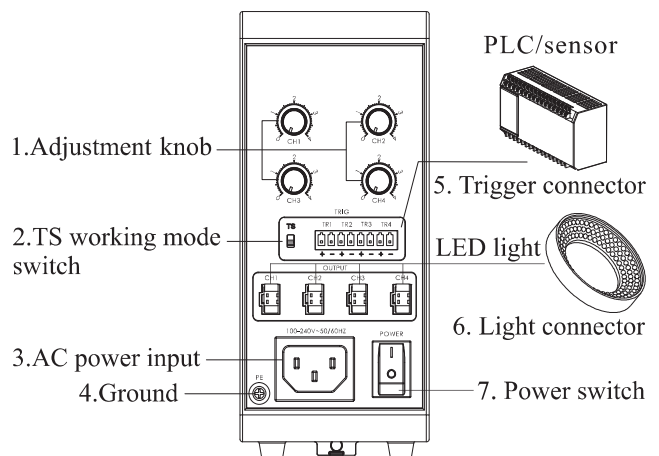
- Manual stepless intensity control
- External trigger: External trigger input (e.g. camera trigger signal) for related light strobes and other sequences. (Strobe mode can greatly improve light source expectancy.)
- Convenient mounting with screws or on DIN rails

Specifications

Item	Parameter	Description
Input voltage	100 - 240V AC 2A 50/60Hz	
Output voltage	14.0 - 24.0V ($\pm 0.2V$)	Continuously adjustable
Lighting mode	Continuous/strobe	
Intensity control	Stepless	Via the adjustment knob
Triggering	Switch	
Response time	$\leq 80\mu s$	
Response frequency	$\leq 1kHz$	

Item	Parameter	Description
ON/OFF mode conversion	Support	Via the working mode switch (TS)
Output power	24W/CH	1CH/2CH total output $\leq 30W$ 3CH/4CH total output $\leq 40W$
Standby power consumption	AP1024F-1	$< 3.5W$
	AP1024F-2	$< 3.6W$
	AP1024F-3	$< 4.5W$
	AP1024F-4	$< 5.0W$
Hi-Pot test	1500VAC 1min	Leakage current $< 10mA$
Insulation	500VDC	Insulation resistance $> 20M\Omega$
Operating temperature	$-5^{\circ}C - 50^{\circ}C$	
Dimensions (mm) (L x W x H)	73.5x129.2x166	Refer to the drawing for details
Weight (kg)	AP1024F-1/2	0.6
	AP1024F-3/4	0.7

Device Overview

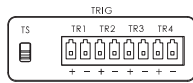


Remark: The image above is for AP1024F-4. The last number in Model AP1024F-1/2/3 indicates the number of adjustment knob, external trigger connector and light connector.

No.	Item	Description
1	Adjustment knob	Turned in clockwise to increase and in anti-clockwise to reduce light intensity.
2	TS working mode switch	Moved up for ON mode, and down for OFF mode
3	AC power input	100 - 240V AC, 50/60Hz
4	Ground	Grounding protection
5	Trigger connector	Connects external trigger for strobe
6	Light connector	Each light individually controlled
7	Power switch	Turns on/off the controller

Trigger Connector

AP1024F-1/2/3/4 offer 1, 2, 3, or 4 trigger channels respectively. Each channel has “+” and “-” input ports. The image below shows the trigger connector of AP1024F-4. Please refer to the “Switch Trigger Wiring Diagram” for more details.



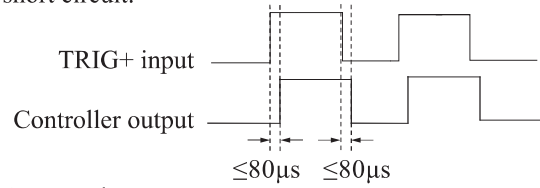
Working Mode Setting

TS Switch	Working Mode	Description
Up	ON	Light is on when “Trig+” and “Trig-” are disconnected; light is off at the short circuit.
Down	OFF	Light is off when “Trig+” and “Trig-” are disconnected; light is on at the short circuit.

Trigger Sequence

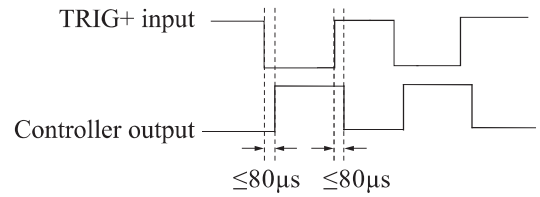
ON Mode:

After an external signal is connected, light is on when “Trig+” and “Trig-” are disconnected; light is off at the short circuit.

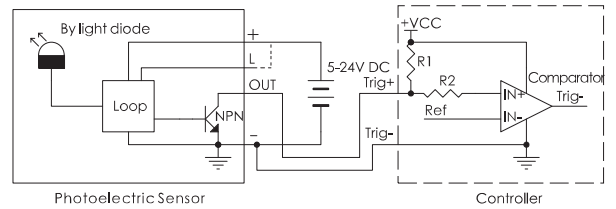


OFF Mode:

After an external signal is connected, light is off when “Trig+” and “Trig-” are disconnected; light is on at the short circuit.

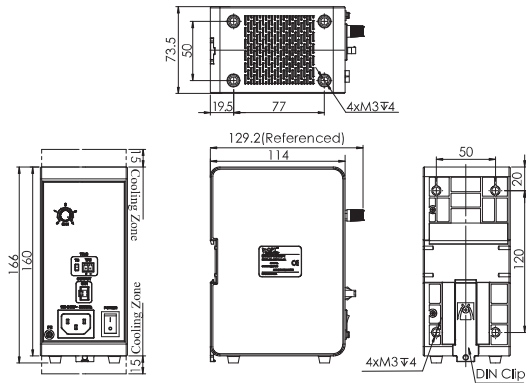


Switch Trigger Wiring Diagram

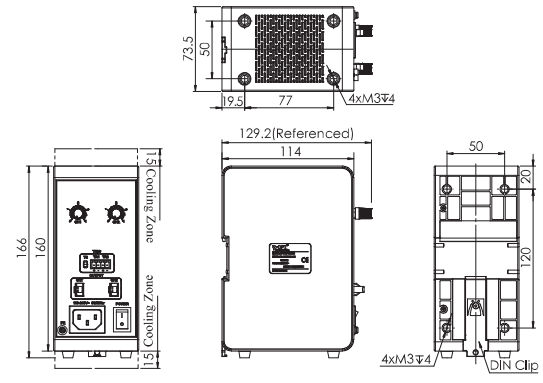


Dimensions (mm)

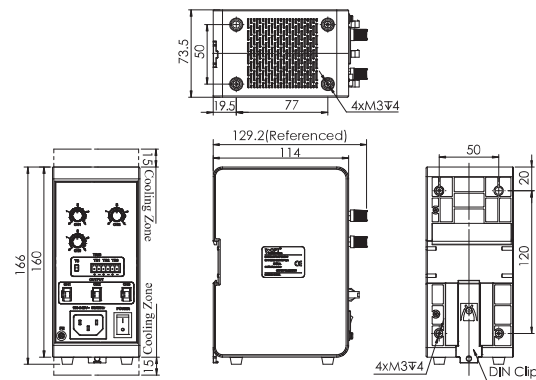
1.OPT-AP1024F-1



2.OPT-AP1024F-2



3.OPT-AP1024F-3



4.OPT-AP1024F-4

