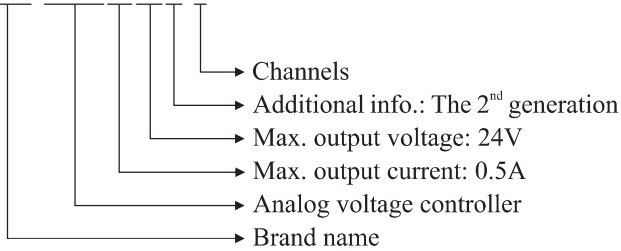


# APM Mini Analog Voltage Controller



## Selection Guide

OPT-APM0524B-2



Item	Parameter	Description
ON/OFF Mode Conversion	Support	Via the working mode switch
Output power	12W/CH	2CH total output ≤ 24W
Standby power consumption	≤ 3W	
Operating temperature	-5°C - 50°C	
Dimensions (mm) (L×W×H)	24×62×108.3	Refer to the drawing for details
Weight (kg)	0.1	

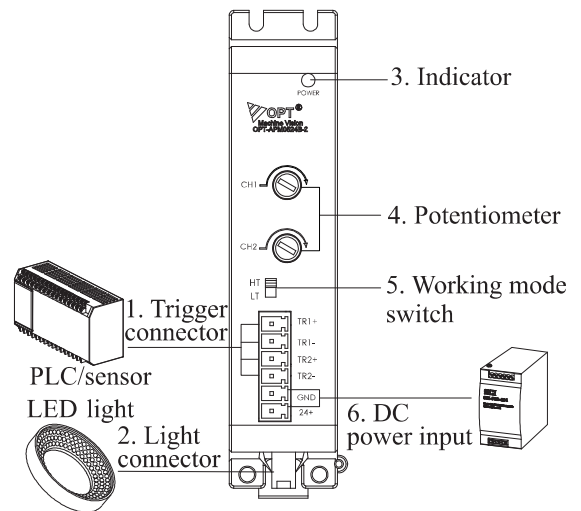
## Product Features

- Compact size
- 20 - 24V DC input; convenient to use DC power on other devices
- Manual stepless light intensity control
- Convenient mounting with screws or on DIN rails
- External trigger: External trigger input (e.g. camera trigger signal) for related light strobes and other sequences. (Strobe mode can greatly improve light source expectancy.)

## Specifications

Item	Parameter	Description
Input voltage	20-24V DC 1.5A	
Output voltage	14.0 - 24.0V (±0.2V)	Continuously adjustable
Lighting mode	Continuous/strobe	
Intensity control	Stepless	Adjusted via potentiometer
Protection for reverse polarity connection	Yes	Protects controller from the damage caused by wrong power connection
Triggering	Switch	
Response time	≤ 80μs	
Response frequency	≤ 1kHz	

## Device Overview

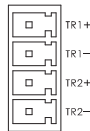


No.	Item	Description
1	Trigger connector	Connects external trigger for strobe
2	Light connector	14 - 24V DC output; each channel individually controlled
3	Power indicator	Indicates the power status: ON or OFF
4	Potentiometer	To adjust light intensity; one knob for each channel

No.	Item	Description
5	Working mode switch	HT: ON mode LT: OFF mode
6	DC power input	20 - 24V DC

## Trigger Connector

APM0524B has two trigger channels. Each channel has “+” and “-” input ports (see the figure below). Please refer to the “Switch Trigger Wiring Diagram” for more details.



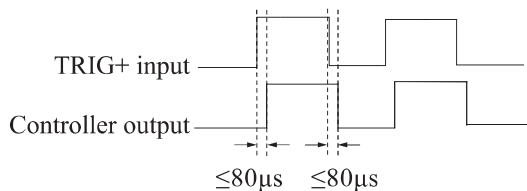
## Working Mode Setting

Switch	Working Mode	Description
HT	ON	Light is on when “Trig+” and “Trig-” are disconnected; light is off at the short circuit.
LT	OFF	Light is off when “Trig+” and “Trig-” are disconnected; light is on at the short circuit.

## Trigger Sequence

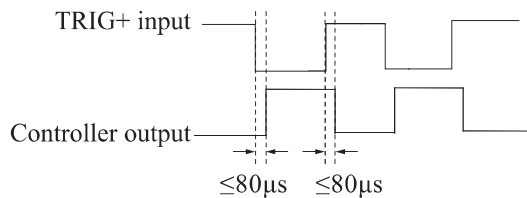
### ON Mode

After an external signal is connected, light is on when “Trig+” and “Trig-” are disconnected; light is off at the short circuit.

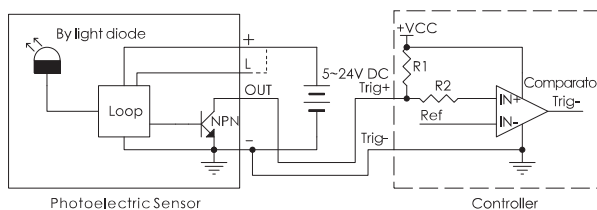


### OFF Mode

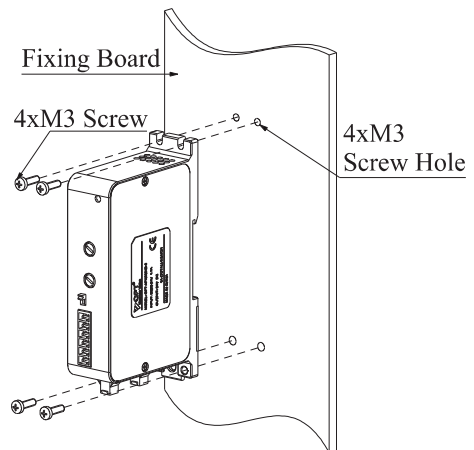
After an external signal is connected, light is off when “Trig+” and “Trig-” are disconnected; light is on at the short circuit.



## Trigger Wiring Diagram



## Mounting



Mounting with screws

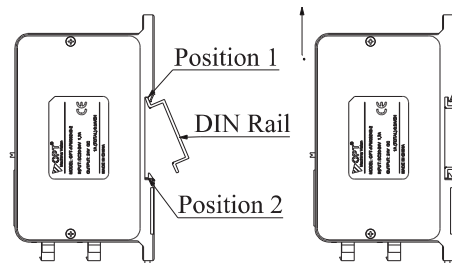
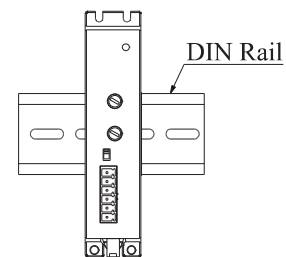


Figure 1 Assembly step

Figure 2 Disassembly step



Mounting on DIN rail

## Dimensions (mm)

