

*VizCam™*

# Machine Vision Solutions For Today's Industrial Applications Using WIZER



**WIZER**

**Machine Vision Application Without Programming**

# Why Machine Vision



**Faster**

**More Consistent in results**

**Operate Longer Hours without rest**

# Advantages Of Machine Vision

- Improve Quality
- Reduce Defects
- Improve Traceability
- Reduce Costs
- Increase Factory Output

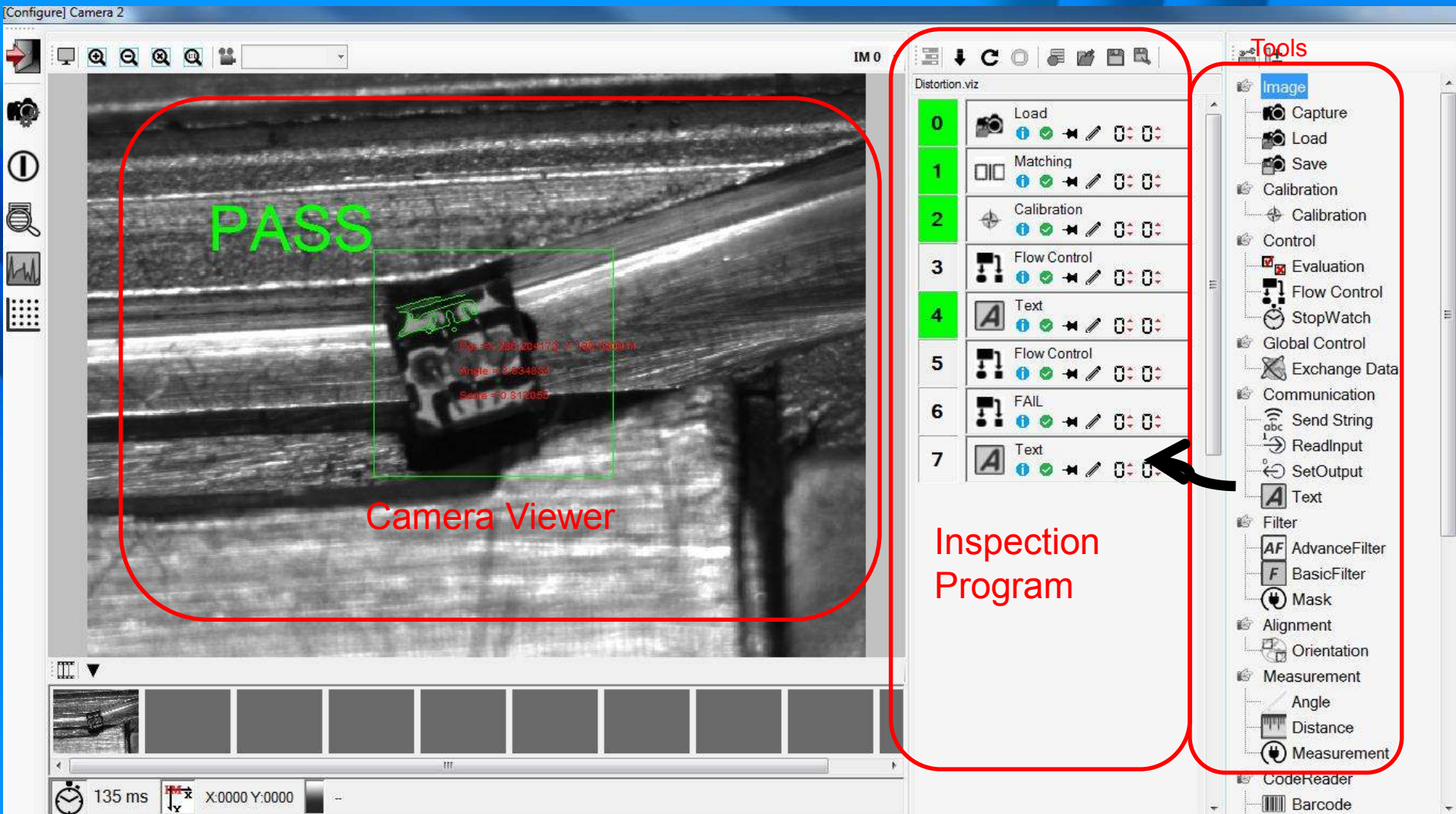
# WIZER Introduction

- **WIZER** is an all-in-one vision software product to build up your machine vision applications quickly without any programming.
- The tool library on the right provides many standard vision tools such as image acquisition, calibration, alignment, measurement, counting, code reading, position locator, etc..... This can be expanded with additional customized tools
- Each tool has its own graphical representation in the workspace, which allows you to see every step of your vision application whilst scrolling the workspace
- The image-centric layout allows you to configure the application through Drag & Drop without the need to write a single line of code



# WIZER Configuration Menu

The page where the user create the inspection program by drag and drop concept.



# **WIZER** Concept

## **EASE OF USE**

Using Drag & Drop concept to select the appropriate vision tools for deployment in full inspection process .....all without any programming

## **FLEXIBILITY & SCALABLE**

Support all levels of vision development from novice users to advanced users

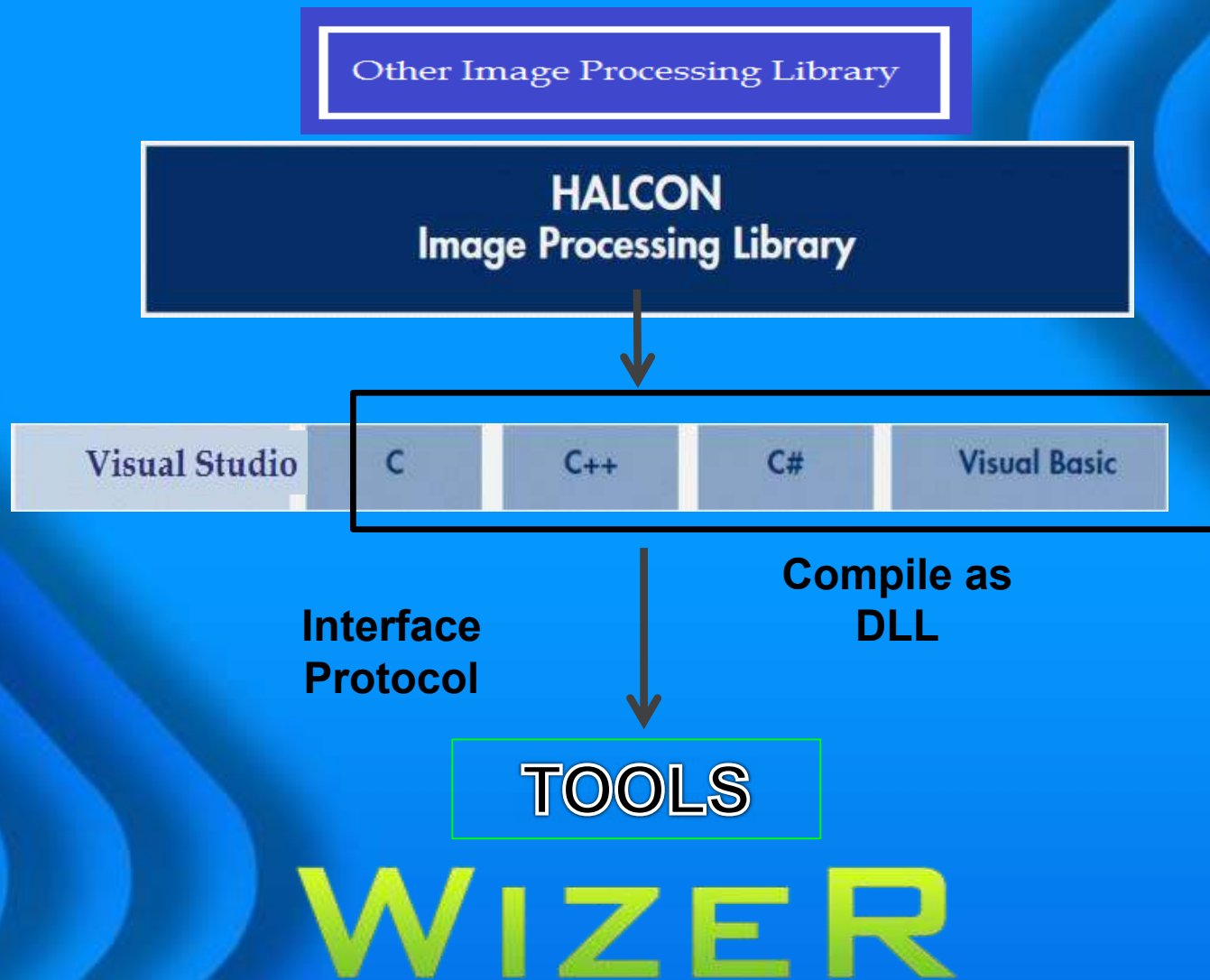
## **REDUCED DEPENDENCE**

Reduced dependence on skilled vision programmers to create vision applications

## **SHORTER TIME**

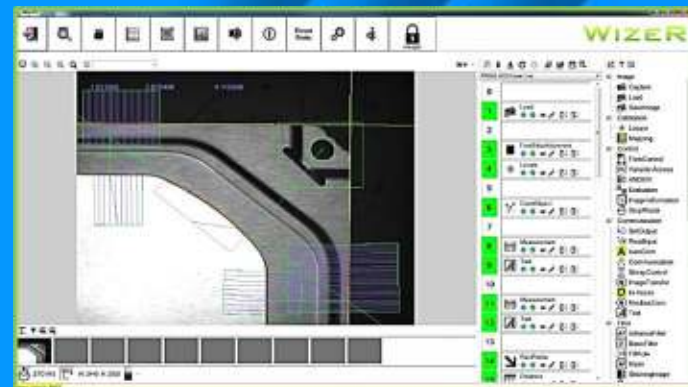
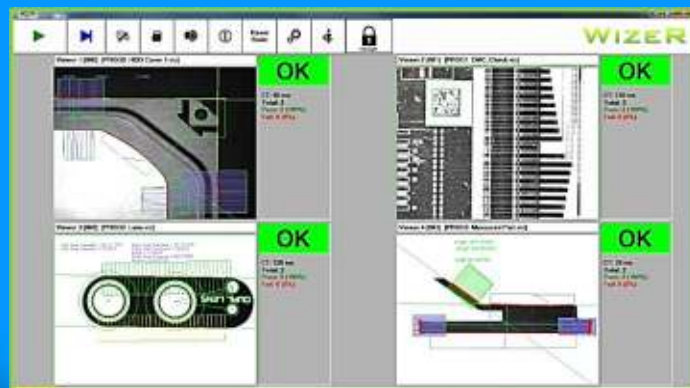
Lead time to create vision applications can be shortened

# WIZER Software Architecture





# WIZER



**Embedded Controller / IPC**

**PC-Based Camera**



**Colour Detection**



**Pattern Matching**



**Surface Defect**



**Measurement**



**Code Identification**

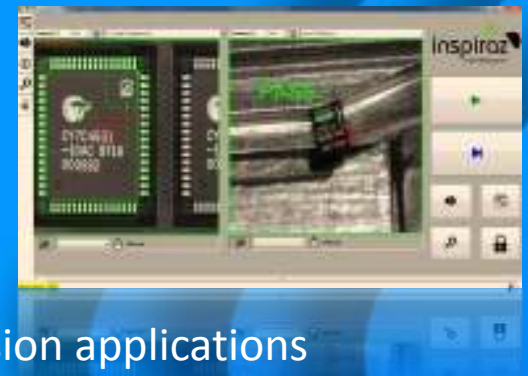


**Robot Guidance**

# Application



# What is in WIZER Software?



**NO PRIOR PROGRAMMING** needed to configure and deploy vision applications

**ABILITY TO CUSTOMIZE** your own inspection application as Plug-Ins for difficult / challenging applications

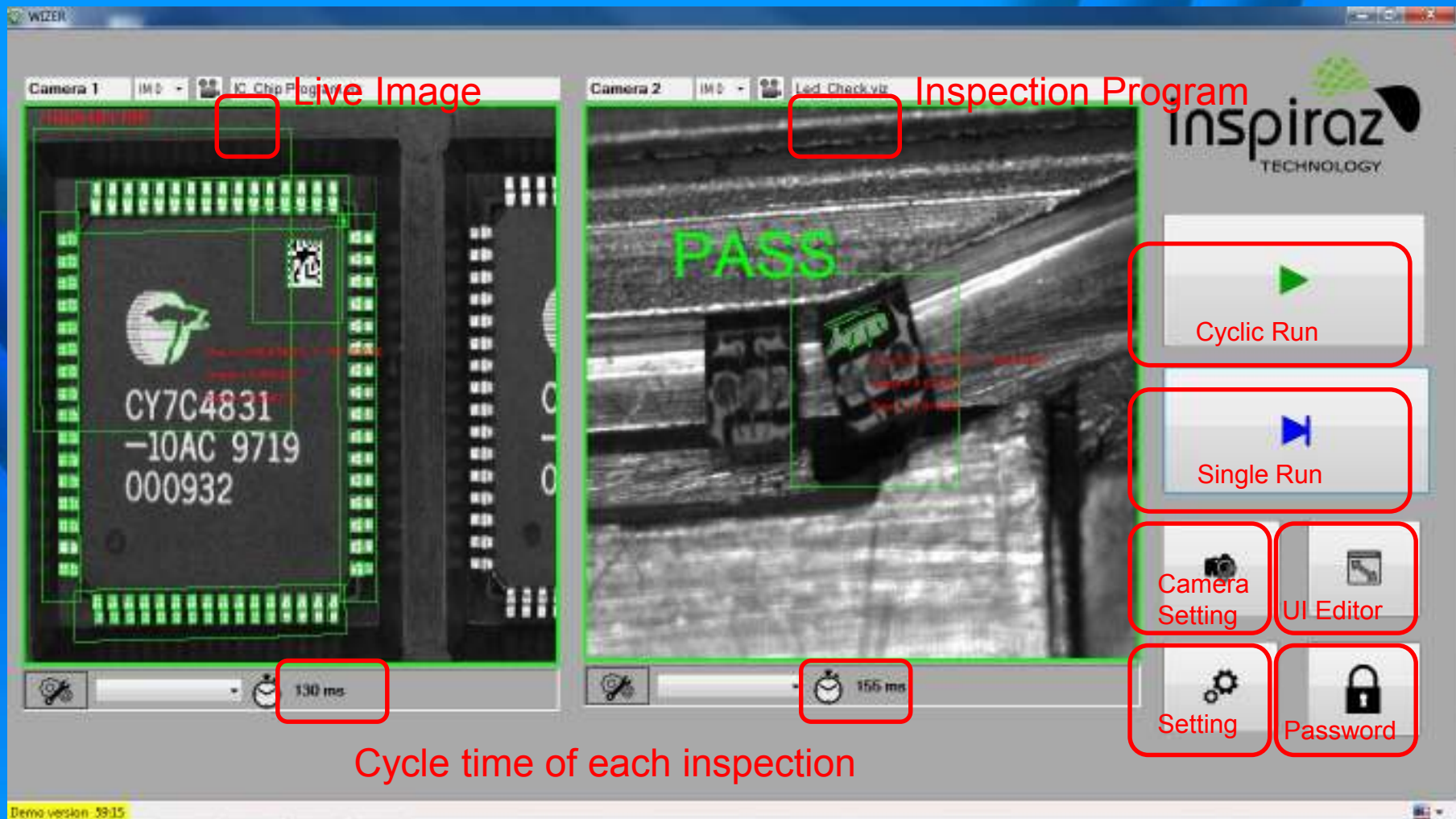
**SIMPLIFIED GUI** can be created to suit the production requirement for ease of use for the operators and technicians

**IMPROVE PRODUCTIVITY** as time taken to deploy a reliable vision system is much shortened without the need to spend weeks writing complex customized software for each vision applications

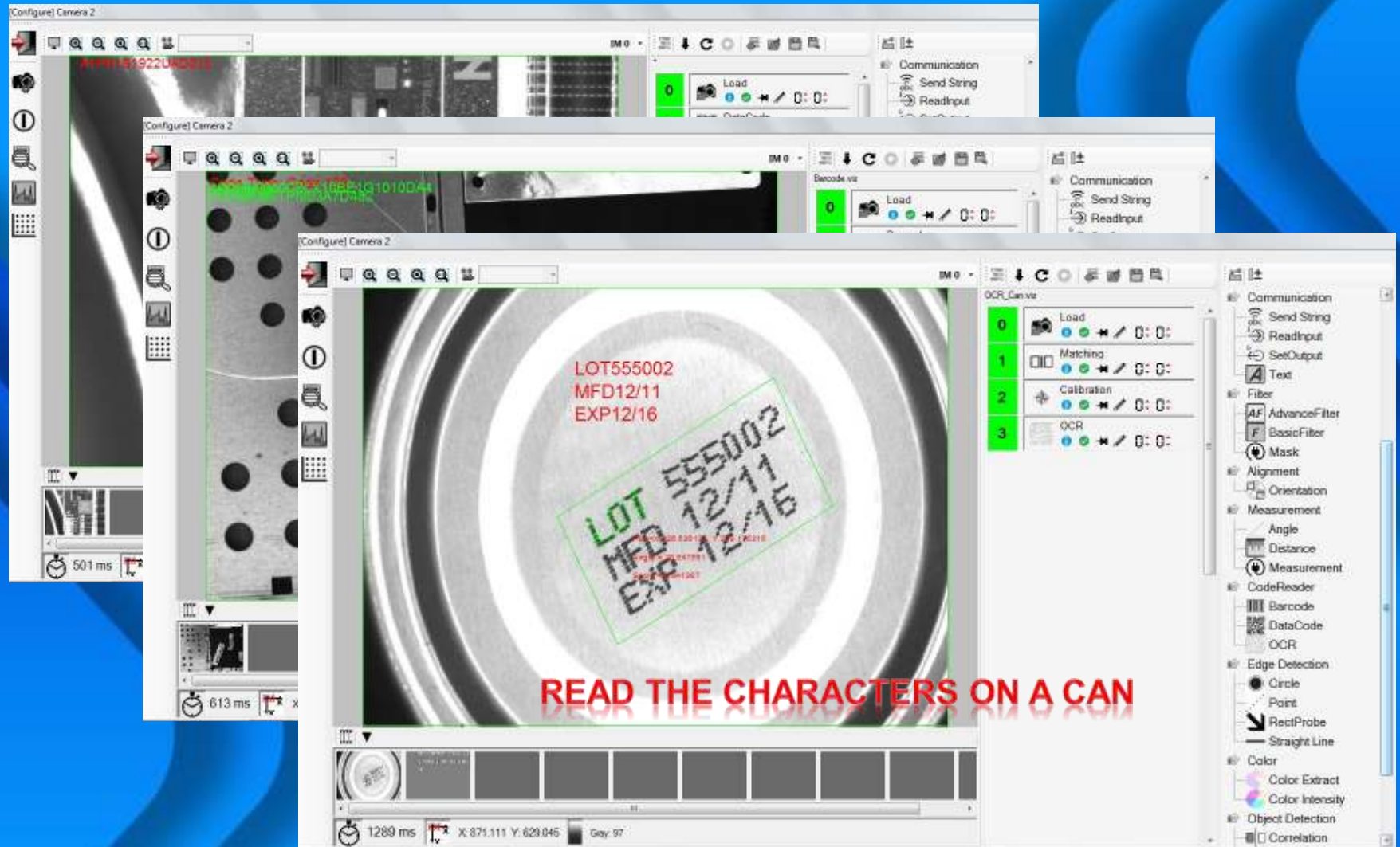
**CAPABILITY FOR MULTI-PROCESSING** with multi camera viewer applications

**ABILITY TO CUSTOMIZE** to run in the equipment software and to set & get parameter externally during the WIZER runtime mode.

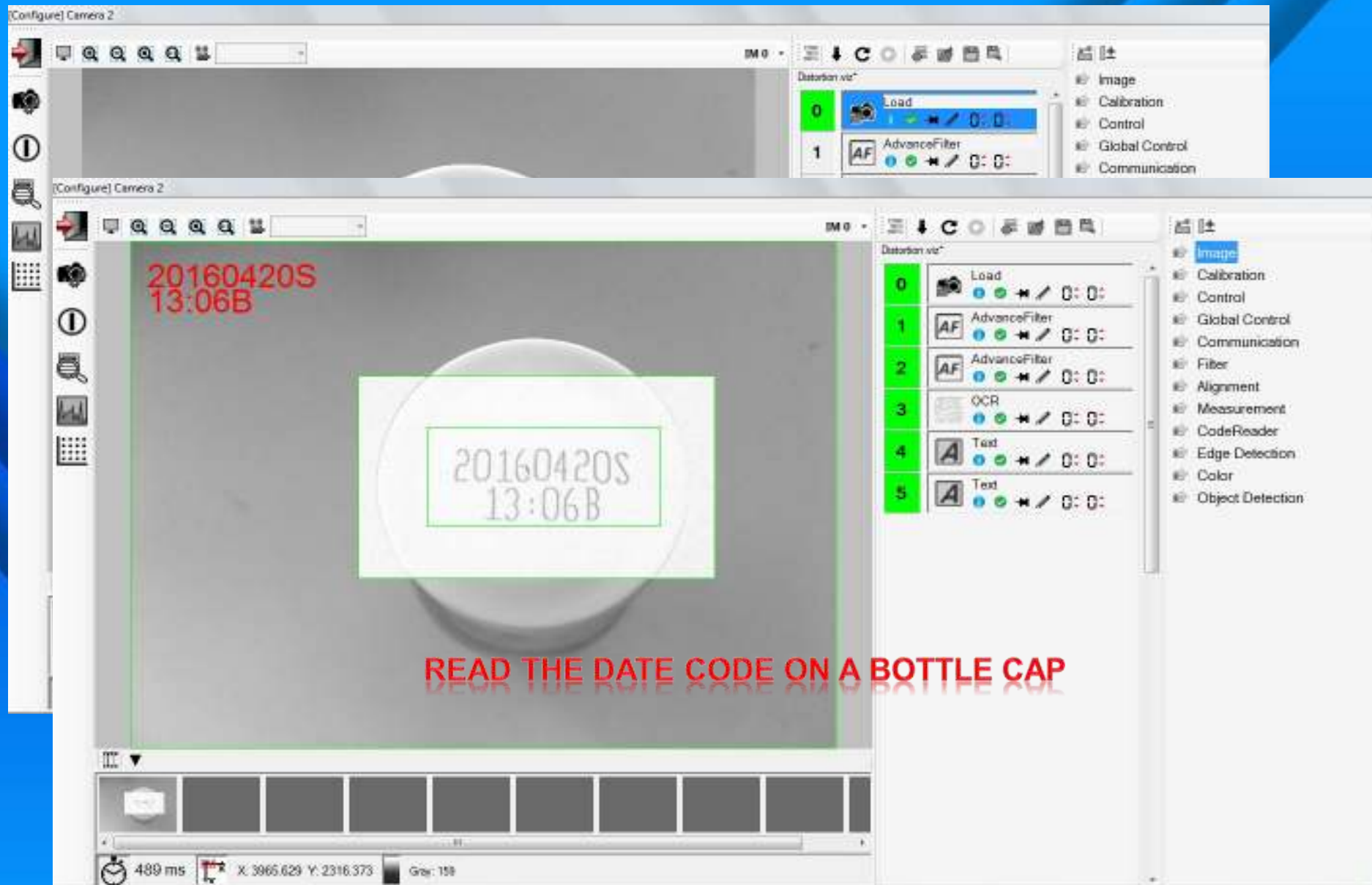
# WIZER Process Menu



# Application – Code Reader & OCR

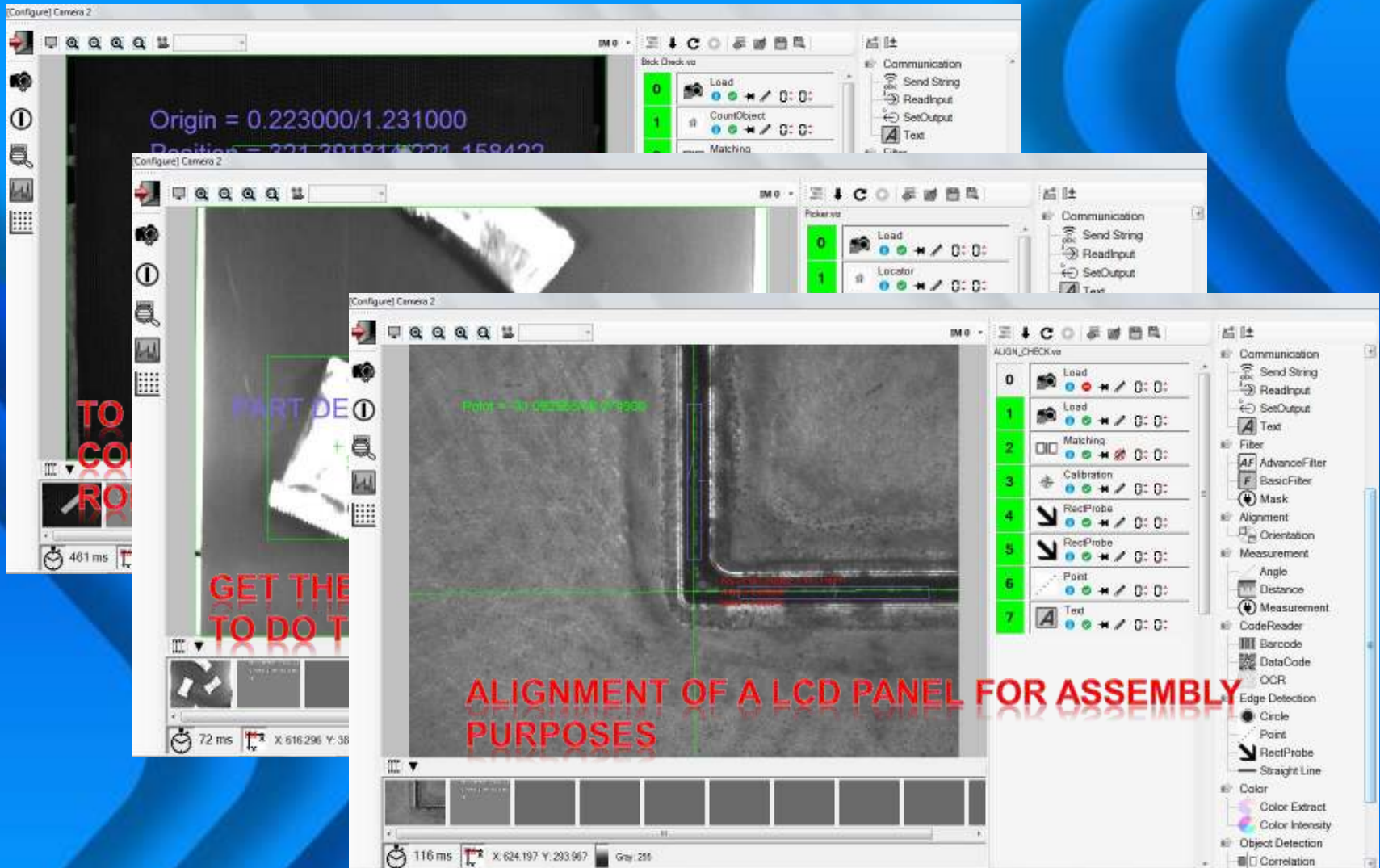








# Application – Alignment

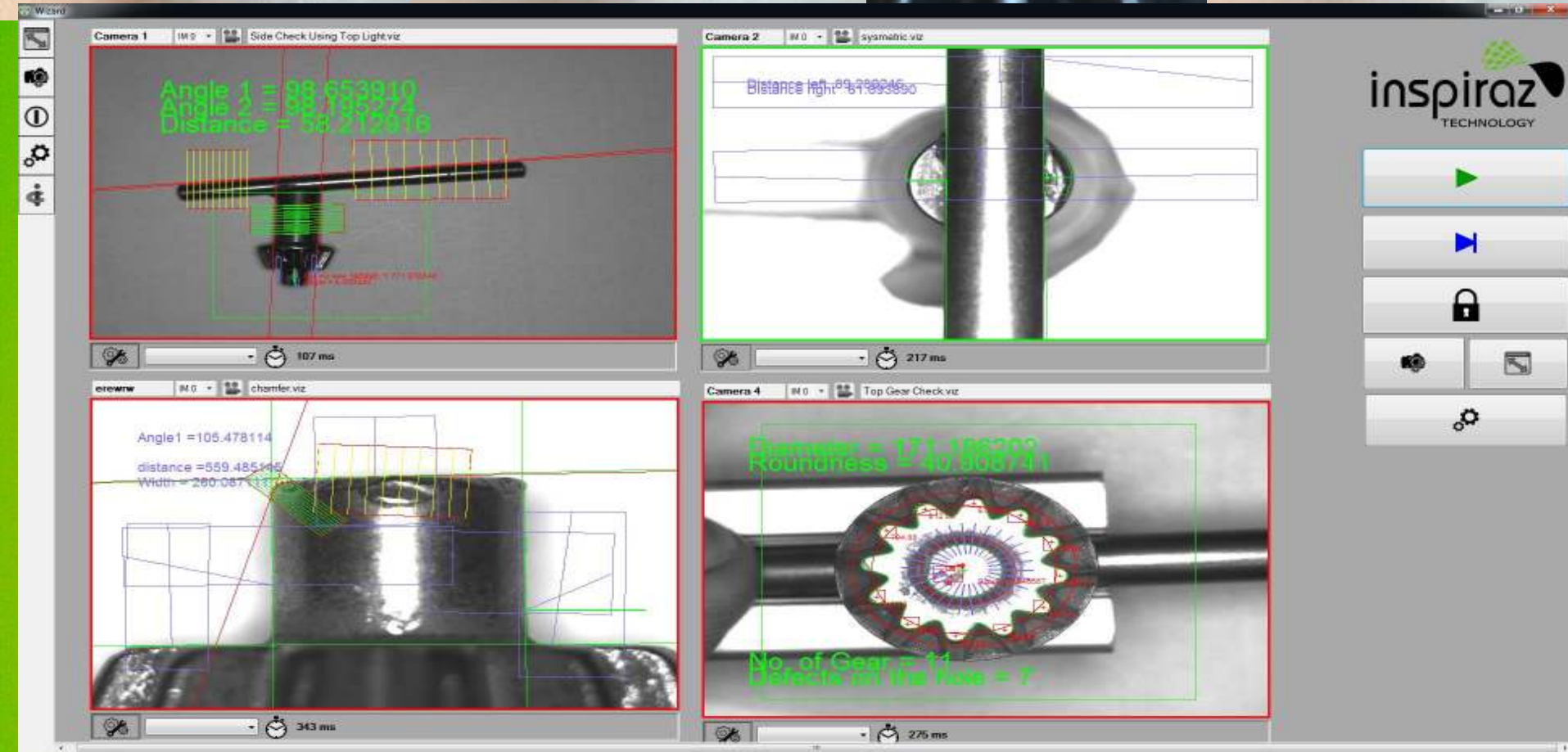


# Application – Alignment & Measurement

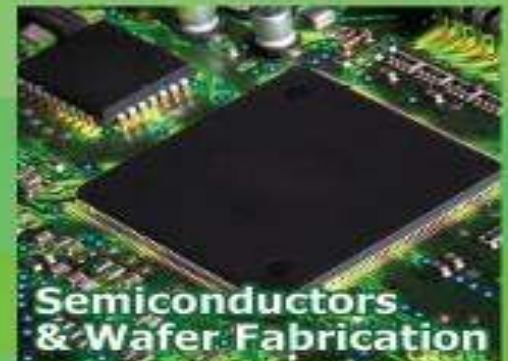




# Case Studies Using WIZER

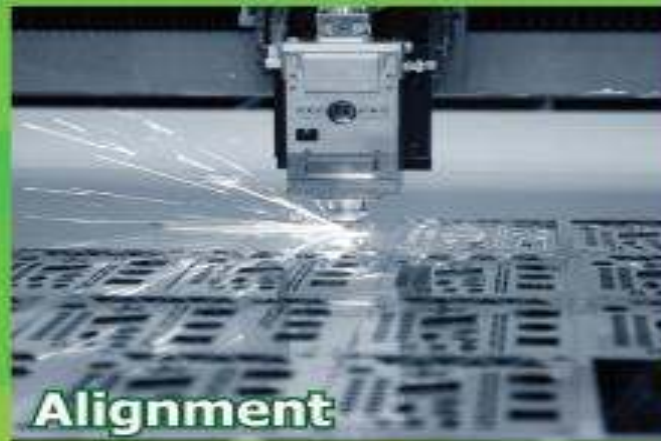
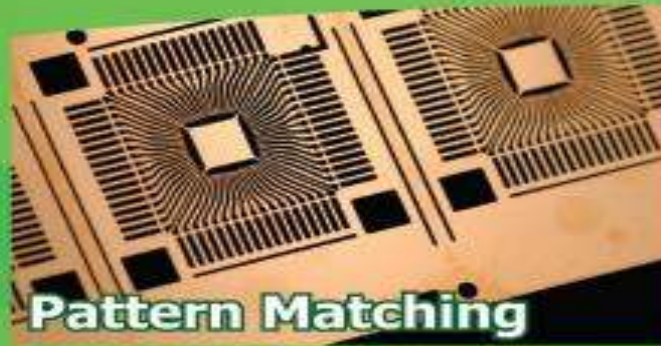


# WIZER Industrial Applications





# WIZER Inspection Applications





# WIZER

*“Your Ultimate Choice  
for  
Machine Vision Software”*